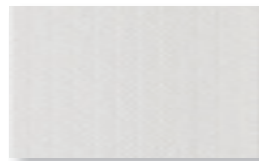


SYDNEY

Monoporosa Rectificado
Rectified Wall Tiles



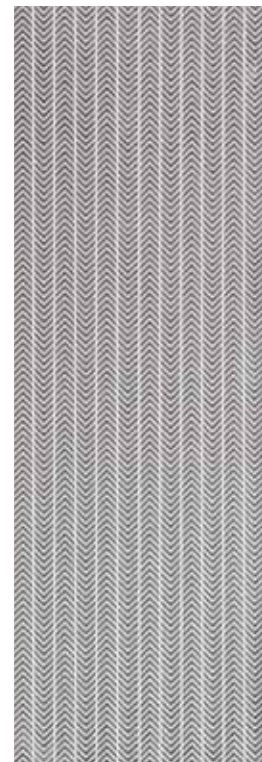
SYDNEY PEARLS
20x33.3 cm (x7.5 mm) 8"x13"
V1239701 - 100216402 - G233
Butech recomienda junta *Recommends joint*
colorstuk rapid n blanco B22501001 - 100004294



SYDNEY PEARLS
33.3x100 cm (x9.2 mm) 13"x39 1/2"
V1440268 - 100214491 - G271
Butech recomienda junta *Recommends joint*
colorstuk rapid n blanco B22501001 - 100004294



SYDNEY GOLD
33.3x100 cm (x9.2 mm) 13"x39 1/2"
V1440270 - 100214448 - G283
Butech recomienda junta *Recommends joint*
colorstuk rapid n blanco B22501001 - 100004294



SYDNEY SILVER
33.3x100 cm (x9.2 mm) 13"x39 1/2"
V1440271 - 100214439 - G283
Butech recomienda junta *Recommends joint*
colorstuk rapid n blanco B22501001 - 100004294

EMBALAJE PACKAGING Modelo Model	x CAJA BOX			x PALET			ADHESIVO Butech
	Piezas	M² (1)	Kg (1)	Box	M² (1)	Kg (1)	
Sydney 33.3x100 cm	3	0.99	17.38	55	54.94	956	Fr-one n
Sydney 20x33.3 cm	15	0.90	17.01	48	47.95	816	Fr-one n

(1) Valores aproximados Approximated values



PARED WALL:
Sydney Silver 33.3x100 cm
SUELO PARED:
Tanzania Nut 25x150 cm

WALL TILES

MOSAICS

FLOOR TILES

PAR-KER

TECHNICAL GUIDE

DISTRIBUTORS